

## Salem Chelsea B00

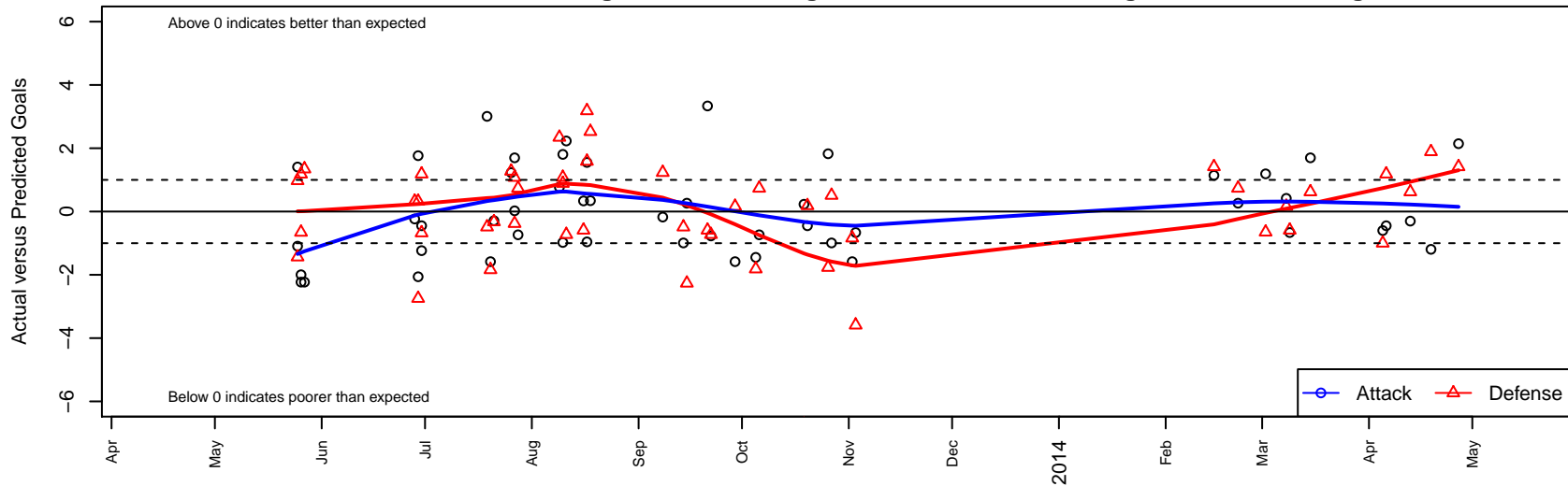
4H Soccer Club  
 Salem, OR  
 B00 total strength=1101  
 attack=4.01 defense=2.01  
 fall league = OPL National Premier League U13  
 notes= played under different clubs: RPSC, 4H;  
 alt names used:  
 4-H Chelsea BU13  
 ODR SFC Chelsea  
 RPSC Chelsea  
 RPSC Chelsea  
 RPSC Chelsea B00  
 RIVERPLATE CHELSEA (OR)  
 RPSC Chelsea U12  
 River Plate Soccer Club Chelsea  
 RPSC Chelsea U12  
 RPSC Chelsea  
 RPSC Chelsea B00  
 RIVERPLATE CHELSEA (OR)

Venues played:  
 Rogue Memorial BU12 Cascade  
 Capital Cup BU13 Gold  
 Beaverton Cup BU13 Gold  
 Oswego Nike Cup Gold U13  
 Chinook Cup Gold U13  
 Mt Hood Challenge BU13 Premier  
 OPL National Premier League U13  
 Spr OYS PTT B00 Timbers Premier  
 OYS State Cup B00



### Salem Chelsea B00

Dots are actual minus expected GF (blue circles) and GA (red triangles).  
 Blue line is smoothed change in attack strength. Red is smoothed change in defense strength.



|       | <b>date</b> | <b>home</b>                     |    | <b>away</b>                  |   | <b>venue</b>                    | <b>pred.home</b> | <b>pred.away</b> |
|-------|-------------|---------------------------------|----|------------------------------|---|---------------------------------|------------------|------------------|
| 26944 | 2014-04-27  | Santos FC Beavers B00           | 0  | Salem Chelsea B00            | 4 | OYS State Cup B00               | 1.42             | 1.86             |
| 26594 | 2014-04-19  | Westside Timbers Samba B00      | 0  | Salem Chelsea B00            | 0 | OYS State Cup B00               | 1.89             | 1.19             |
| 26345 | 2014-04-13  | Salem Chelsea B00               | 2  | PCU Red B00                  | 1 | OYS State Cup B00               | 2.30             | 1.62             |
| 25897 | 2014-04-06  | WAFC Real Madrid B00            | 2  | Salem Chelsea B00            | 1 | Spr OYS PTT B00 Timbers Premier | 3.18             | 1.45             |
| 25717 | 2014-04-05  | Academia Leon B00               | 3  | Salem Chelsea B00            | 1 | Spr OYS PTT B00 Timbers Premier | 2.00             | 1.60             |
| 24661 | 2014-03-15  | Salem Chelsea B00               | 4  | PCU Red B00                  | 1 | Spr OYS PTT B00 Timbers Premier | 2.30             | 1.62             |
| 24293 | 2014-03-09  | Salem Chelsea B00               | 1  | Washington Timbers Red B00   | 4 | Spr OYS PTT B00 Timbers Premier | 1.66             | 3.41             |
| 24021 | 2014-03-08  | Salem Chelsea B00               | 2  | BSC Portland Black B00       | 2 | Spr OYS PTT B00 Timbers Premier | 1.58             | 2.16             |
| 23729 | 2014-03-02  | ETFC Rovers Black -was Blue B00 | 3  | Salem Chelsea B00            | 4 | Spr OYS PTT B00 Timbers Premier | 2.35             | 2.81             |
| 23040 | 2014-02-22  | Salem Chelsea B00               | 1  | Westside Timbers Copa B00    | 3 | Spr OYS PTT B00 Timbers Premier | 0.74             | 3.74             |
| 22517 | 2014-02-15  | Santos FC Beavers B00           | 0  | Salem Chelsea B00            | 3 | Spr OYS PTT B00 Timbers Premier | 1.42             | 1.86             |
| 17249 | 2013-11-03  | Salem Chelsea B00               | 1  | Washington Timbers Red B00   | 7 | OPL National Premier League U13 | 1.66             | 3.41             |
| 16809 | 2013-11-02  | BSC Portland Black B00          | 3  | Salem Chelsea B00            | 0 | OPL National Premier League U13 | 2.16             | 1.58             |
| 16228 | 2013-10-27  | Salem Chelsea B00               | 2  | Eastside Timbers Red B00     | 0 | OPL National Premier League U13 | 2.99             | 0.51             |
| 15914 | 2013-10-26  | Crossfire Oregon Green I B00    | 4  | Salem Chelsea B00            | 3 | OPL National Premier League U13 | 2.23             | 1.17             |
| 15327 | 2013-10-20  | Salem Chelsea B00               | 1  | WAFC Real Madrid B00         | 3 | OPL National Premier League U13 | 1.45             | 3.18             |
| 14986 | 2013-10-19  | FC Portland Navy B00            | 11 | Salem Chelsea B00            | 1 | OPL National Premier League U13 | 4.27             | 0.77             |
| 13325 | 2013-10-06  | Westside Timbers Copa B00       | 3  | Salem Chelsea B00            | 0 | OPL National Premier League U13 | 3.74             | 0.74             |
| 12923 | 2013-10-05  | WAFC Real Madrid B00            | 5  | Salem Chelsea B00            | 0 | OPL National Premier League U13 | 3.18             | 1.45             |
| 12337 | 2013-09-29  | Salem Chelsea B00               | 0  | BSC Portland Black B00       | 2 | OPL National Premier League U13 | 1.58             | 2.16             |
| 11403 | 2013-09-22  | Salem Chelsea B00               | 0  | FC Portland Navy B00         | 5 | OPL National Premier League U13 | 0.77             | 4.27             |
| 11023 | 2013-09-21  | Washington Timbers Red B00      | 4  | Salem Chelsea B00            | 5 | OPL National Premier League U13 | 3.41             | 1.66             |
| 10441 | 2013-09-15  | Salem Chelsea B00               | 1  | Westside Timbers Copa B00    | 6 | OPL National Premier League U13 | 0.74             | 3.74             |
| 10053 | 2013-09-14  | Eastside Timbers Red B00        | 1  | Salem Chelsea B00            | 2 | OPL National Premier League U13 | 0.51             | 2.99             |
| 9482  | 2013-09-08  | Salem Chelsea B00               | 1  | Crossfire Oregon Green I B00 | 1 | OPL National Premier League U13 | 1.17             | 2.23             |
| 7466  | 2013-08-18  | NWSSA FC Beavers B00            | 0  | Salem Chelsea B00            | 2 | Mt Hood Challenge BU13 Premier  | 2.53             | 1.66             |
| 7117  | 2013-08-17  | Idaho Rush Nike B00             | 0  | Salem Chelsea B00            | 1 | Mt Hood Challenge BU13 Premier  | 1.59             | 1.96             |
| 7146  | 2013-08-17  | Salem Chelsea B00               | 3  | WAFC Real Madrid B00         | 0 | Mt Hood Challenge BU13 Premier  | 1.45             | 3.18             |

|      | <b>date</b> | <b>home</b>                   |   | <b>away</b>                   |   | <b>venue</b>                   | <b>pred.home</b> | <b>pred.away</b> |
|------|-------------|-------------------------------|---|-------------------------------|---|--------------------------------|------------------|------------------|
| 6819 | 2013-08-16  | Washington Timbers Red B00    | 4 | Salem Chelsea B00             | 2 | Mt Hood Challenge BU13 Premier | 3.41             | 1.66             |
| 6495 | 2013-08-11  | Salem Chelsea B00             | 3 | FC Portland Navy B00          | 5 | Chinook Cup Gold U13           | 0.77             | 4.27             |
| 6188 | 2013-08-10  | Westside Timbers Samba B00    | 1 | Salem Chelsea B00             | 3 | Chinook Cup Gold U13           | 1.89             | 1.19             |
| 6192 | 2013-08-10  | Salem Chelsea B00             | 2 | Crossfire Oregon Green II B00 | 0 | Chinook Cup Gold U13           | 2.98             | 1.08             |
| 5923 | 2013-08-09  | Salem Chelsea B00             | 3 | WAFC Juventus B00             | 0 | Chinook Cup Gold U13           | 2.23             | 2.34             |
| 4994 | 2013-07-28  | Westside Timbers Copa B00     | 3 | Salem Chelsea B00             | 0 | Oswego Nike Cup Gold U13       | 3.74             | 0.74             |
| 4726 | 2013-07-27  | Crossfire Oregon Green II B00 | 0 | Salem Chelsea B00             | 3 | Oswego Nike Cup Gold U13       | 1.08             | 2.98             |
| 4727 | 2013-07-27  | Salem Chelsea B00             | 4 | PCU Red B00                   | 2 | Oswego Nike Cup Gold U13       | 2.30             | 1.62             |
| 4541 | 2013-07-26  | FC Portland Navy B00          | 3 | Salem Chelsea B00             | 2 | Oswego Nike Cup Gold U13       | 4.27             | 0.77             |
| 4222 | 2013-07-21  | ASE Emerald Stephenson B00    | 1 | Salem Chelsea B00             | 3 | Beaverton Cup BU13 Gold        | 0.67             | 3.29             |
| 3775 | 2013-07-20  | Salem Chelsea B00             | 0 | BSC Portland Black B00        | 4 | Beaverton Cup BU13 Gold        | 1.58             | 2.16             |
| 3442 | 2013-07-19  | Eastside Timbers Red B00      | 1 | Salem Chelsea B00             | 6 | Beaverton Cup BU13 Gold        | 0.51             | 2.99             |
| 2443 | 2013-06-30  | WAFC Real Madrid B00          | 2 | Salem Chelsea B00             | 1 | Capital Cup BU13 Gold          | 3.18             | 1.45             |
| 2444 | 2013-06-30  | Salem Chelsea B00             | 1 | FC West Halcones B00          | 2 | Capital Cup BU13 Gold          | 2.24             | 1.32             |
| 2266 | 2013-06-29  | Salem Chelsea B00             | 0 | NWSSA FC Barcelona B00        | 4 | Capital Cup BU13 Gold          | 2.06             | 1.25             |
| 2268 | 2013-06-29  | Salem Chelsea B00             | 4 | FC West Halcones B00          | 1 | Capital Cup BU13 Gold          | 2.24             | 1.32             |
| 2128 | 2013-06-28  | FC West Halcones B00          | 1 | Salem Chelsea B00             | 2 | Capital Cup BU13 Gold          | 1.32             | 2.24             |
| 537  | 2013-05-27  | WAFC Juventus B00             | 1 | Salem Chelsea B00             | 0 | Rogue Memorial BU12 Cascade    | 2.34             | 2.23             |
| 473  | 2013-05-26  | Salem Chelsea B00             | 1 | RVSC Timbers Red B00          | 0 | Rogue Memorial BU12 Cascade    | 3.00             | 1.18             |
| 477  | 2013-05-26  | WAFC Juventus B00             | 3 | Salem Chelsea B00             | 0 | Rogue Memorial BU12 Cascade    | 2.34             | 2.23             |
| 388  | 2013-05-25  | Salem Chelsea B00             | 2 | Brookings Tsunami B00         | 0 | Rogue Memorial BU12 Cascade    | 3.09             | 0.97             |
| 394  | 2013-05-25  | Ashland Supernova B00         | 2 | Salem Chelsea B00             | 5 | Rogue Memorial BU12 Cascade    | 0.56             | 3.59             |